



**EASTWEST**  
HOMES

HOUSE & LAND  
PACKAGE



3 2 2

THE LAND OF PLENTY  
**ELISTON**

**\$526,600\***

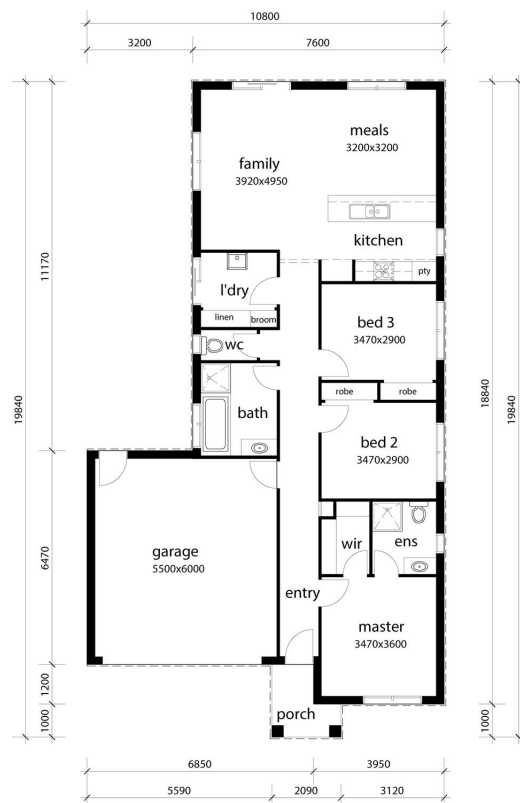
## HOUSE & LAND PACKAGE

Lot 2638 Garrard Crescent (350m<sup>2</sup>)  
CLYDE

The Darling 17 (163.1m<sup>2</sup>)

- Austral bricks & Boral roof tiles;
- Stoddart sectional garage door w/ 2 remotes;
- Bradnam's aluminium windows;
- Corinthian feature entry door;
- 3 bedrooms with BIR;
- Designer kitchen w/ 600mm appliances;
- Open plan meals / living;
- Floor coverings throughout;
- Braemar 3.7 Star ducted heating;
- TV point & data point;
- Double bowl kitchen sink;
- Wattyl paint;
- Stylus whiteware, tapware & accessories;
- + more!

**Dylan Wulff - 0455 444 654**



\*Price is subject to soil test, site survey and developer approval.

All Images are for illustrative purposes only. Please contact Dylan Wulff for exact specifications and included features.

[www.eastwesthomes.com.au](http://www.eastwesthomes.com.au)