



EASTWEST
HOMES

HOUSE & LAND
PACKAGE



SUMMER / HILL
BOTANIC
RIDGE

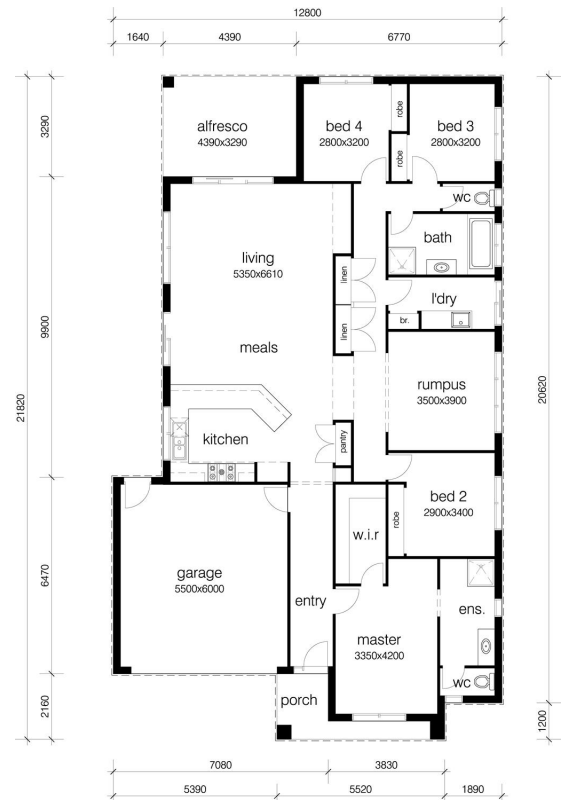
\$703,200*

HOUSE & LAND PACKAGE

Lot 711 Distinction Rise (713m²)
BOTANIC RIDGE

The Tasman 26 (243.6m²)

- Austral bricks;
 - Corinthian entry door & Gainsborough trilock;
 - Bradnam's double glazed windows;
 - 2550mm ceilings;
 - 450mm eaves;
 - Floor coverings throughout;
 - ILVE 900mm appliances;
 - Quantum Quartz 20mm stone benchtops;
 - Clark double bowl sink;
 - Clipsal LED downlights;
 - NBN & recycled water;
 - Caroma & Dorf tapware & whiteware;
 - Bramer 4.7 star ducted heating;
 - Wattyl 3 coat paint.+ more!
- Dylan Wulff - 0455 444 654**



*Price is subject to soil test, site survey and developer approval.

All Images are for illustrative purposes only. Please contact Dylan Wulff for exact specifications and included features.

www.eastwesthomes.com.au